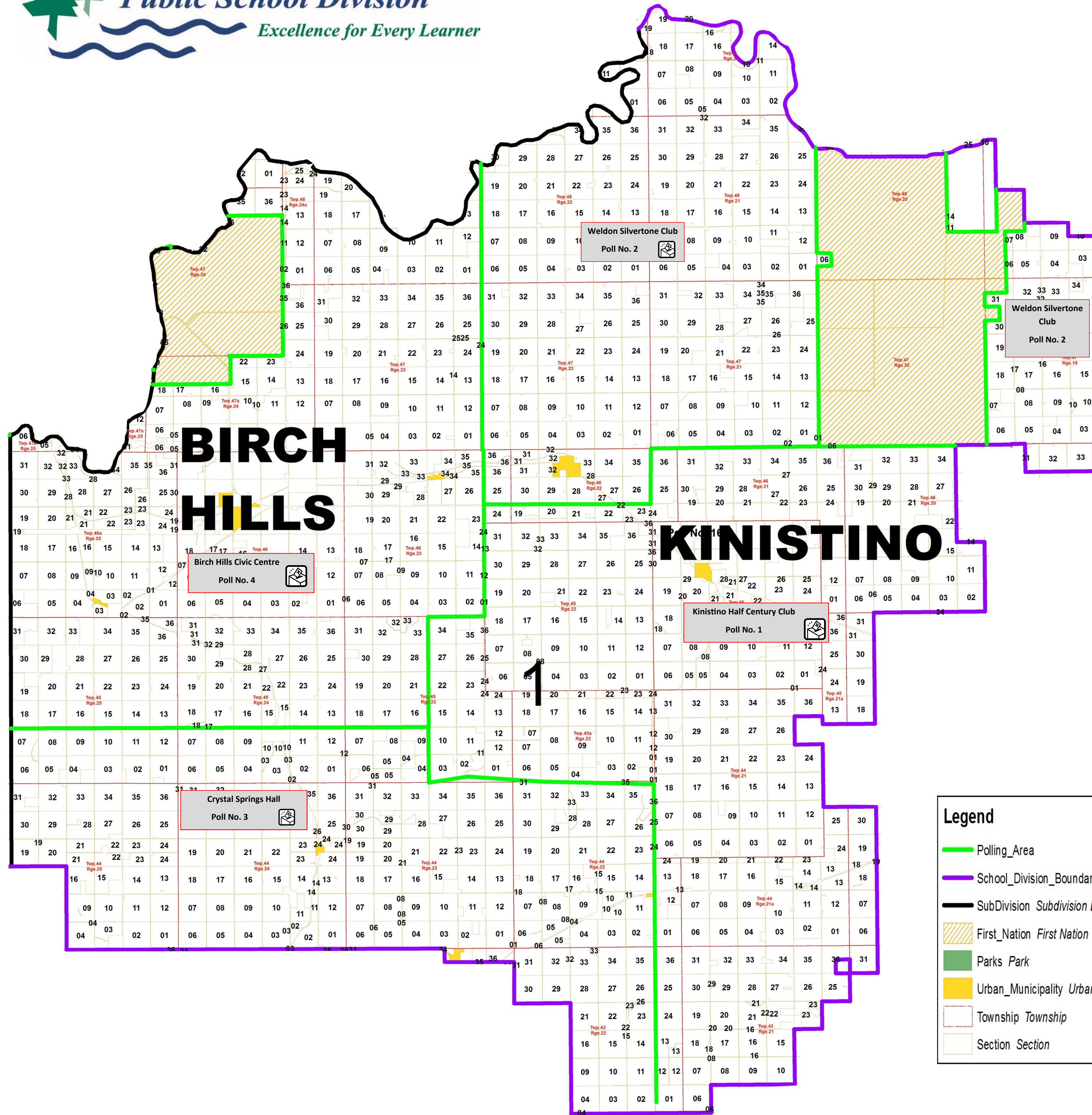
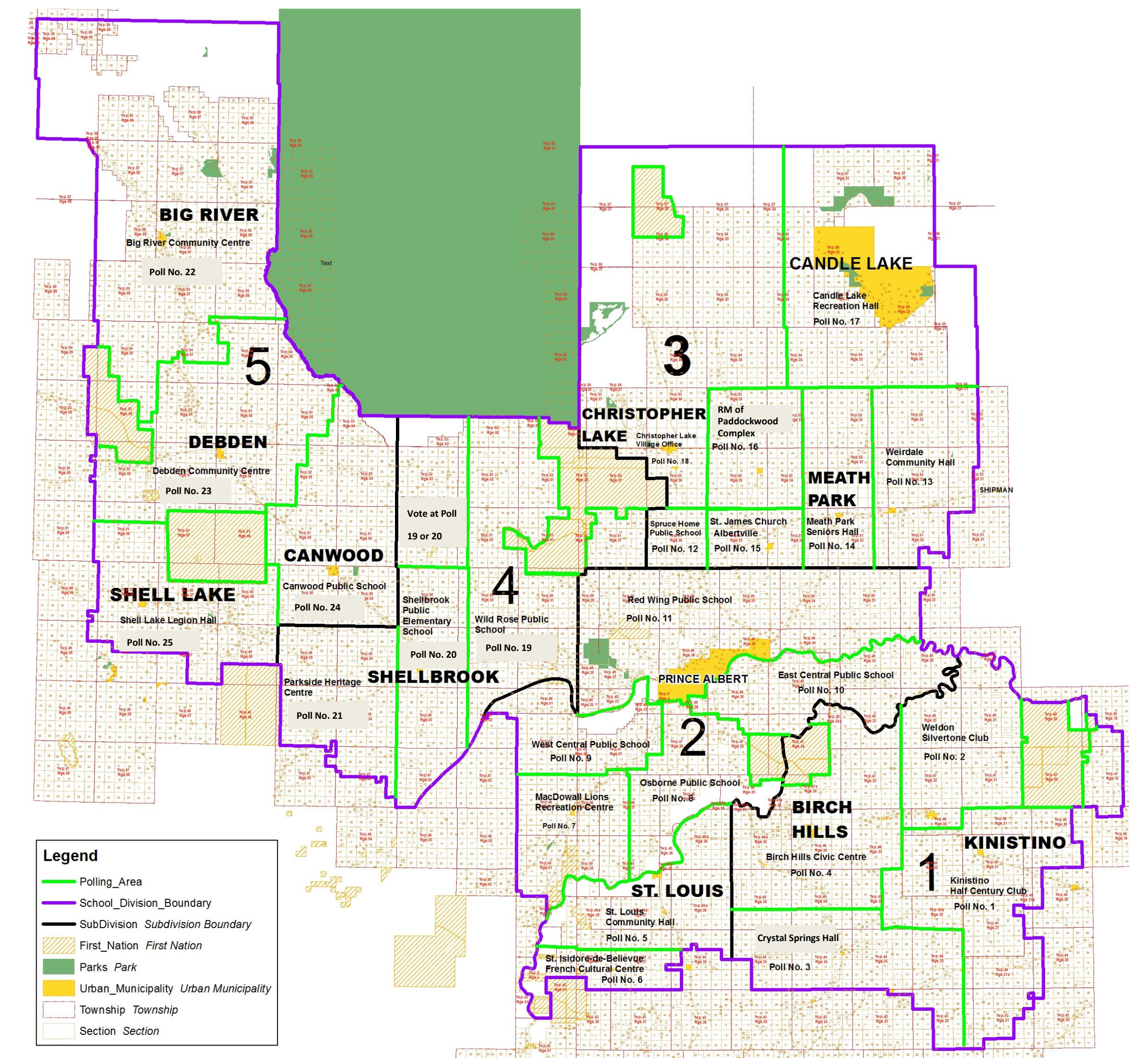


Saskatchewan Rivers Public School Division No. 119
Board of Education Election
Monday, November 9, 2020
(Polls are open from 9:00 a.m. to 8:00 pm.)

Subdivision 1 Polling Area Map



Subdivision No. 1		
Poll No. 1	Half Century Club	Kinistino
Poll No. 2	Weldon Silvertone Club	Weldon
Poll No. 3	Crystal Springs Hall	Crystal Springs
Poll No. 4	Birch Hills Civic Centre	Birch Hills



Legend

- Polling_Area
- School_Division_Boundary
- SubDivision Subdivision Boundary
- First_Nation First Nation
- Parks Park
- Urban_Municipality Urban Municipality
- Township Township
- Section Section

Legend

- Polling_Area
- School_Division_Boundary
- SubDivision Subdivision Boundary
- First_Nation First Nation
- Parks Park
- Urban_Municipality Urban Municipality
- Township Township
- Section Section

This map has been prepared and authorized for distribution by Jerrold Pidborochynski, Returning Officer for the Saskatchewan Rivers Public School Division No. 119.
Saskatchewan Rivers Public School Division
545—11th Street East
Prince Albert, SK S6V 1B1
(306) 764-1571
Election Office (306) 922-3647